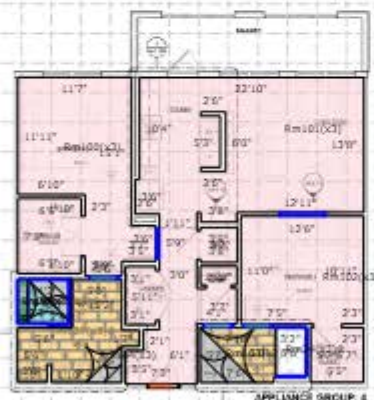




UNIT B1 - CEILING PLAN  
16' x 17'

- 1. UNIT B1 - CEILING PLAN
- 2. UNIT B1 - TAGGED PLAN
- 3. UNIT B1 - CONSTRUCTION PLAN
- 4. UNIT B1 - OPENING ELEV
- 5. UNIT B1 - BAR ELEV
- 6. UNIT B1 - SHEDDING LEGEND
- 7. UNIT B1 - GENERAL NOTES
- 8. UNIT B1 - RCP LEGEND
- 9. UNIT B1 - PLANS AND ELEVATIONS



UNIT B1 - TAGGED PLAN  
17' x 16'



UNIT B1 - CONSTRUCTION PLAN  
16' x 17'

### UNIT SHELVING LEGEND

- 1. UNIT SHELVING LEGEND
- 2. UNIT SHELVING LEGEND
- 3. UNIT SHELVING LEGEND
- 4. UNIT SHELVING LEGEND
- 5. UNIT SHELVING LEGEND
- 6. UNIT SHELVING LEGEND
- 7. UNIT SHELVING LEGEND
- 8. UNIT SHELVING LEGEND
- 9. UNIT SHELVING LEGEND
- 10. UNIT SHELVING LEGEND
- 11. UNIT SHELVING LEGEND
- 12. UNIT SHELVING LEGEND
- 13. UNIT SHELVING LEGEND
- 14. UNIT SHELVING LEGEND
- 15. UNIT SHELVING LEGEND
- 16. UNIT SHELVING LEGEND
- 17. UNIT SHELVING LEGEND
- 18. UNIT SHELVING LEGEND
- 19. UNIT SHELVING LEGEND
- 20. UNIT SHELVING LEGEND
- 21. UNIT SHELVING LEGEND
- 22. UNIT SHELVING LEGEND
- 23. UNIT SHELVING LEGEND
- 24. UNIT SHELVING LEGEND
- 25. UNIT SHELVING LEGEND
- 26. UNIT SHELVING LEGEND
- 27. UNIT SHELVING LEGEND
- 28. UNIT SHELVING LEGEND
- 29. UNIT SHELVING LEGEND
- 30. UNIT SHELVING LEGEND
- 31. UNIT SHELVING LEGEND
- 32. UNIT SHELVING LEGEND
- 33. UNIT SHELVING LEGEND
- 34. UNIT SHELVING LEGEND
- 35. UNIT SHELVING LEGEND
- 36. UNIT SHELVING LEGEND
- 37. UNIT SHELVING LEGEND
- 38. UNIT SHELVING LEGEND
- 39. UNIT SHELVING LEGEND
- 40. UNIT SHELVING LEGEND
- 41. UNIT SHELVING LEGEND
- 42. UNIT SHELVING LEGEND
- 43. UNIT SHELVING LEGEND
- 44. UNIT SHELVING LEGEND
- 45. UNIT SHELVING LEGEND
- 46. UNIT SHELVING LEGEND
- 47. UNIT SHELVING LEGEND
- 48. UNIT SHELVING LEGEND
- 49. UNIT SHELVING LEGEND
- 50. UNIT SHELVING LEGEND
- 51. UNIT SHELVING LEGEND
- 52. UNIT SHELVING LEGEND
- 53. UNIT SHELVING LEGEND
- 54. UNIT SHELVING LEGEND
- 55. UNIT SHELVING LEGEND
- 56. UNIT SHELVING LEGEND
- 57. UNIT SHELVING LEGEND
- 58. UNIT SHELVING LEGEND
- 59. UNIT SHELVING LEGEND
- 60. UNIT SHELVING LEGEND
- 61. UNIT SHELVING LEGEND
- 62. UNIT SHELVING LEGEND
- 63. UNIT SHELVING LEGEND
- 64. UNIT SHELVING LEGEND
- 65. UNIT SHELVING LEGEND
- 66. UNIT SHELVING LEGEND
- 67. UNIT SHELVING LEGEND
- 68. UNIT SHELVING LEGEND
- 69. UNIT SHELVING LEGEND
- 70. UNIT SHELVING LEGEND
- 71. UNIT SHELVING LEGEND
- 72. UNIT SHELVING LEGEND
- 73. UNIT SHELVING LEGEND
- 74. UNIT SHELVING LEGEND
- 75. UNIT SHELVING LEGEND
- 76. UNIT SHELVING LEGEND
- 77. UNIT SHELVING LEGEND
- 78. UNIT SHELVING LEGEND
- 79. UNIT SHELVING LEGEND
- 80. UNIT SHELVING LEGEND
- 81. UNIT SHELVING LEGEND
- 82. UNIT SHELVING LEGEND
- 83. UNIT SHELVING LEGEND
- 84. UNIT SHELVING LEGEND
- 85. UNIT SHELVING LEGEND
- 86. UNIT SHELVING LEGEND
- 87. UNIT SHELVING LEGEND
- 88. UNIT SHELVING LEGEND
- 89. UNIT SHELVING LEGEND
- 90. UNIT SHELVING LEGEND
- 91. UNIT SHELVING LEGEND
- 92. UNIT SHELVING LEGEND
- 93. UNIT SHELVING LEGEND
- 94. UNIT SHELVING LEGEND
- 95. UNIT SHELVING LEGEND
- 96. UNIT SHELVING LEGEND
- 97. UNIT SHELVING LEGEND
- 98. UNIT SHELVING LEGEND
- 99. UNIT SHELVING LEGEND
- 100. UNIT SHELVING LEGEND

### GENERAL NOTES

- 1. GENERAL NOTES
- 2. GENERAL NOTES
- 3. GENERAL NOTES
- 4. GENERAL NOTES
- 5. GENERAL NOTES
- 6. GENERAL NOTES
- 7. GENERAL NOTES
- 8. GENERAL NOTES
- 9. GENERAL NOTES
- 10. GENERAL NOTES
- 11. GENERAL NOTES
- 12. GENERAL NOTES
- 13. GENERAL NOTES
- 14. GENERAL NOTES
- 15. GENERAL NOTES
- 16. GENERAL NOTES
- 17. GENERAL NOTES
- 18. GENERAL NOTES
- 19. GENERAL NOTES
- 20. GENERAL NOTES
- 21. GENERAL NOTES
- 22. GENERAL NOTES
- 23. GENERAL NOTES
- 24. GENERAL NOTES
- 25. GENERAL NOTES
- 26. GENERAL NOTES
- 27. GENERAL NOTES
- 28. GENERAL NOTES
- 29. GENERAL NOTES
- 30. GENERAL NOTES
- 31. GENERAL NOTES
- 32. GENERAL NOTES
- 33. GENERAL NOTES
- 34. GENERAL NOTES
- 35. GENERAL NOTES
- 36. GENERAL NOTES
- 37. GENERAL NOTES
- 38. GENERAL NOTES
- 39. GENERAL NOTES
- 40. GENERAL NOTES
- 41. GENERAL NOTES
- 42. GENERAL NOTES
- 43. GENERAL NOTES
- 44. GENERAL NOTES
- 45. GENERAL NOTES
- 46. GENERAL NOTES
- 47. GENERAL NOTES
- 48. GENERAL NOTES
- 49. GENERAL NOTES
- 50. GENERAL NOTES
- 51. GENERAL NOTES
- 52. GENERAL NOTES
- 53. GENERAL NOTES
- 54. GENERAL NOTES
- 55. GENERAL NOTES
- 56. GENERAL NOTES
- 57. GENERAL NOTES
- 58. GENERAL NOTES
- 59. GENERAL NOTES
- 60. GENERAL NOTES
- 61. GENERAL NOTES
- 62. GENERAL NOTES
- 63. GENERAL NOTES
- 64. GENERAL NOTES
- 65. GENERAL NOTES
- 66. GENERAL NOTES
- 67. GENERAL NOTES
- 68. GENERAL NOTES
- 69. GENERAL NOTES
- 70. GENERAL NOTES
- 71. GENERAL NOTES
- 72. GENERAL NOTES
- 73. GENERAL NOTES
- 74. GENERAL NOTES
- 75. GENERAL NOTES
- 76. GENERAL NOTES
- 77. GENERAL NOTES
- 78. GENERAL NOTES
- 79. GENERAL NOTES
- 80. GENERAL NOTES
- 81. GENERAL NOTES
- 82. GENERAL NOTES
- 83. GENERAL NOTES
- 84. GENERAL NOTES
- 85. GENERAL NOTES
- 86. GENERAL NOTES
- 87. GENERAL NOTES
- 88. GENERAL NOTES
- 89. GENERAL NOTES
- 90. GENERAL NOTES
- 91. GENERAL NOTES
- 92. GENERAL NOTES
- 93. GENERAL NOTES
- 94. GENERAL NOTES
- 95. GENERAL NOTES
- 96. GENERAL NOTES
- 97. GENERAL NOTES
- 98. GENERAL NOTES
- 99. GENERAL NOTES
- 100. GENERAL NOTES

### RCP LEGEND

- 1. RCP LEGEND
- 2. RCP LEGEND
- 3. RCP LEGEND
- 4. RCP LEGEND
- 5. RCP LEGEND
- 6. RCP LEGEND
- 7. RCP LEGEND
- 8. RCP LEGEND
- 9. RCP LEGEND
- 10. RCP LEGEND
- 11. RCP LEGEND
- 12. RCP LEGEND
- 13. RCP LEGEND
- 14. RCP LEGEND
- 15. RCP LEGEND
- 16. RCP LEGEND
- 17. RCP LEGEND
- 18. RCP LEGEND
- 19. RCP LEGEND
- 20. RCP LEGEND
- 21. RCP LEGEND
- 22. RCP LEGEND
- 23. RCP LEGEND
- 24. RCP LEGEND
- 25. RCP LEGEND
- 26. RCP LEGEND
- 27. RCP LEGEND
- 28. RCP LEGEND
- 29. RCP LEGEND
- 30. RCP LEGEND
- 31. RCP LEGEND
- 32. RCP LEGEND
- 33. RCP LEGEND
- 34. RCP LEGEND
- 35. RCP LEGEND
- 36. RCP LEGEND
- 37. RCP LEGEND
- 38. RCP LEGEND
- 39. RCP LEGEND
- 40. RCP LEGEND
- 41. RCP LEGEND
- 42. RCP LEGEND
- 43. RCP LEGEND
- 44. RCP LEGEND
- 45. RCP LEGEND
- 46. RCP LEGEND
- 47. RCP LEGEND
- 48. RCP LEGEND
- 49. RCP LEGEND
- 50. RCP LEGEND
- 51. RCP LEGEND
- 52. RCP LEGEND
- 53. RCP LEGEND
- 54. RCP LEGEND
- 55. RCP LEGEND
- 56. RCP LEGEND
- 57. RCP LEGEND
- 58. RCP LEGEND
- 59. RCP LEGEND
- 60. RCP LEGEND
- 61. RCP LEGEND
- 62. RCP LEGEND
- 63. RCP LEGEND
- 64. RCP LEGEND
- 65. RCP LEGEND
- 66. RCP LEGEND
- 67. RCP LEGEND
- 68. RCP LEGEND
- 69. RCP LEGEND
- 70. RCP LEGEND
- 71. RCP LEGEND
- 72. RCP LEGEND
- 73. RCP LEGEND
- 74. RCP LEGEND
- 75. RCP LEGEND
- 76. RCP LEGEND
- 77. RCP LEGEND
- 78. RCP LEGEND
- 79. RCP LEGEND
- 80. RCP LEGEND
- 81. RCP LEGEND
- 82. RCP LEGEND
- 83. RCP LEGEND
- 84. RCP LEGEND
- 85. RCP LEGEND
- 86. RCP LEGEND
- 87. RCP LEGEND
- 88. RCP LEGEND
- 89. RCP LEGEND
- 90. RCP LEGEND
- 91. RCP LEGEND
- 92. RCP LEGEND
- 93. RCP LEGEND
- 94. RCP LEGEND
- 95. RCP LEGEND
- 96. RCP LEGEND
- 97. RCP LEGEND
- 98. RCP LEGEND
- 99. RCP LEGEND
- 100. RCP LEGEND

NORTHWOOD RAVIN APARTMENTS



UNIT B1 - PLANS AND ELEVATIONS

UNIT B1 - PLANS AND ELEVATIONS

UNIT B1 - PLANS AND ELEVATIONS

UNIT B1 - PLANS AND ELEVATIONS

UNIT B1 - PLANS AND ELEVATIONS

UNIT B1 - PLANS AND ELEVATIONS

UNIT B1 - PLANS AND ELEVATIONS

**Northwood Ravin Apartments Park - Public Quantities**

Item Name	Net Area	Waste Ratio	Qty	Unit
CPT-1 Carpet: Shaw Contract, Casa Tile, Maiz 5T252/25111, (18"x36")	63.54	18.50%	78	SY
CPT-2 Carpet: Shaw Contract, Cross Weave Tile, Maiz 5T526/25111, (18"x36" – Ashlar Install	43.72	14.30%	51	SY
CPT-3 Carpet: Flor, Fancy Free, Stone, 21-1554-02, (19.69"x19.69" – Monolithic Install	25.54	11.10%	28.72	SY
CPT-4 Carpet: J+J Flooring, Integral, Essential, 7310/2719, (24"x24" – Ashlar Install	1,888.76	14.40%	2,207.11	SY
LVT-1: Shaw Contract, Crossing Paths 5.0 4392V, Spindle, 91140, (18"x18"	25,824.06	6.40%	27,596.25	SF
LVT-2: Shaw Contract, In Unison 5.0, Spindle 91140, (9"x36" – Ashlar Install	3,911.61	3.50%	4,054.50	SF
LVT-3: Shaw Contract, Soundscape, Rattan 63140, (6"x48" – Ashlar Install	432.55	10.30%	482	SF
LVT-4: Shaw Contract, Branching out 5mm Acoustic, Riverside Oak 56140, (6"x48" – Ashlar Install	8,253.54	12.70%	9,454.00	SF
LVT-8: Cobalt Surfaces, Katanga, Myrtle KP5-801, (7"x48")	268.44	6.50%	287	SF
LVT-9: Bolon, Graphic, String 102814, (19.7" x 19.7"	568.39	2.40%	582.32	SF
LVT-10: Bolon, Graphic, Mache 102812, (19.7" x 19.7"	289.59	2.30%	296.55	SF
LVT-11: Bolon, Graphic, Graphic Tan 116457, (19.7" x 19.7"	291.75	2.50%	299.25	SF
LVT-12: Bentley, Batiste, Opaque, 801844, (18" x 36" - Herringbone Install	542.65	3.50%	562.5	SF
LVT-13: Bentley, Batiste, Weave, 801841, (18" x 36" - Ashlar Install	573.65	4.20%	598.5	SF
LVT @Amenity Stairs	262.16	7.50%	283.5	SF
Fitness Flooring: RF-1 (30%), LVT-9(30%), LVT-10(20%), LVT-11(20%	1,670.23	5.00%	1,757.74	SF
FT-1 Floor Tile: Trinity Surfaces, Bosk, White Oak Matte, (8"x48" – Ashlar Install	2,848.05	6.10%	3,032.00	SF
FT-2 Floor Tile: Audrey Lane, Stepping Stones – Pattern A, Calacatta Matte, Marfil Matte, Pulpis Matte, Arcadia Matte, (Size - Varies	132.94	7.70%	144	SF
FT-3 Floor Tile: Tilebar, Nature Micro Pebble, Raja Blend Matte, (11.81"x11.81" Mosaics Sheet	187.69	6.80%	201.47	SF
FT-4 Floor Tile: Trinity Surfaces, Oleander, Maddock Matte, (13"x13" – Monolithic Install	793.37	2.60%	814.49	SF
FT-5 Floor Tile: Trinity Surfaces, Calderas, Beige Matte, (12"x24" - Monolithic Install	276.92	11.80%	314	SF
FT-6 Floor Tile: Trinity Surfaces, Waverley, Champagne Matte, (12"x24" - Monolithic Install	992.8	6.30%	1,060.00	SF
FT-7 Floor Tile: Tilebar, Nature Round Pebble, Lombok Blend Matte, (11.81"x11.81" Mosaics Sheet	101.79	10.90%	114.29	SF
FT-8 Floor Tile: Trinity Surfaces, Oleander, Banyon, (13"x13" – Monolithic Install	283.33	10.60%	316.88	SF
FT-9 Floor Tile: Trinity Surfaces, Hawthorne, Beige Grip, (8"x48" – Ashlar Install	1,093.13	5.80%	1,160.00	SF
Floor Tile @Level 3 RR	67.14	18.10%	82	SF
Shower Floor Tile @Pet Spa	30.45	27.50%	42	SF
WT-1 Wall Tile: Caesar Ceramics, Deco Solutions, Peonia, (24"x48" – Vertical Stacked	142.54	19.00%	176	SF
WT-2 Wall Tile: Trinity Surfaces, Adora, White Onyx Polished, (12"x24" – Vertical Stacked	557.33	16.60%	668	SF
WT-3 Wall Tile: Trinity Surfaces, Prestige, Onice Cream Matte, (12"x24" – Vertical Stacked	144.24	5.10%	152	SF
WT-4 Wall Tile: Tilebar, Angela Harris Wilder, Protea Leaves Matte, (8"x8"	49.1	7.90%	53.33	SF
WT-5 Wall Tile: Tilebar, Colorplay Fluted, Grey 3D Glossy, (4.5"x18" – Vertical Stacked	77.78	7.80%	84.38	SF
WT-7 Wall Tile: Fireclay Tile, Mini Star & Cross, Feldspar Matte, (2"x4" – 5-5/8"x9-1/16" Star & Cross combined dimension	160.23	0.70%	161.43	SF
WT-8 Wall Tile: Trinity Surfaces, Radiance, Beige Glossy, (2"x9" – Vertical Stacked	182	1.40%	184.5	SF
WT-9 Wall Tile: Trinity Surfaces, Radiance, Bianco Glossy, (2"x9" – Vertical Stacked	699.49	2.50%	717.25	SF
WT-10 Wall Tile: Daltile, Elemental Selection, Smoked Geode, (63"x126"	501.89	46.40%	937.13	SF
WT-11 Wall Tile: Best Tile, Villa, Gris, (4"x16" – Vertical Stacked	128.51	4.30%	134.22	SF
WT-12 Wall Tile: Trinity Surfaces, Laurel, Vert Ondule, (12"x24" – Horizontal Stacked	23.87	20.40%	30	SF
WT-13 Wall Tile: Daltile, Classic Color Wheel, Biscuit K175, (3"x6" – Stacked	111.13	5.00%	117	SF
WT-14 Wall Tile: Best Tile, Villa, Off White, (4"x16" – Horizontal Stacked	313.82	11.40%	354.22	SF
WT-16 Wall Tile: Tilebar, Stonework Collection Fluted, Nero Marquina, (12"x24" – Vertical Stacked	36.56	20.50%	46	SF
WT-18 Wall Tile: Tilebar, Stonework Collection Fluted, Nero Marquina, (12"x24" – Vertical Stacked	131.44	2.60%	135	SF
Wall Tile @Level 3 RR Wet Wall	60.99	4.70%	64	SF
WT-15 4" Bullnose Tile Base: Daltile, Color Wheel Linear, Matte Urban Putty 0761(2), 4"x8'	37.14	0.00%	37.14	LF
WT-17 3" Bullnose Tile: Trinity Surfaces, Waverly Bullnose Rectified, Champagne Matte, 3"x12'	200.12	0.00%	200.12	LF
Carpet to Concrete Transition	5.94	0.00%	5.94	LF
Carpet to Resilient Transition	45.74	0.00%	45.74	LF
Carpet to Resilient Transition @Corridors	8,581.00	0.00%	8,581.00	LF
Fire Door Threshold/Floor Transition Plate: Black	10.68	0.00%	10.68	LF
Resilient to Concrete Transition	337.96	0.00%	337.96	LF
Schluter Reno-U Transition	25.07	0.00%	25.07	LF
Tile to Concrete Transition	11.5	0.00%	11.5	LF
Tile to Resilient Transition	56.63	0.00%	56.63	LF
Tile Edge Trim	109.65	0.00%	109.65	LF
Tile Outside Corner Trim	207.07	0.00%	207.07	LF
SC-1 Sealed Concrete: Clear Stain Finish	6,056.23	0.00%	6,056.23	SF
Concrete @Garage	76,531.61	0.00%	76,531.61	SF
Concrete @Stairs	7,896.42	0.00%	7,896.42	SF
Golf Simulator Flooring - To be supplied by manufacturer	215.19	0.00%	215.19	SF
FT-1 Floor Tile Grout: Custom Building Products, Oyster Gray 386	2,848.05	0.00%	2,848.05	SF
FT-2 Floor Tile Grout: Warm Gray	132.94	0.00%	132.94	SF
FT-3 Floor Tile Grout: Beige	187.69	0.00%	187.69	SF
FT-4 Floor Tile Grout: Custom Building Products, Cape Gray 546	793.37	0.00%	793.37	SF
FT-5 Floor Tile Grout: Custom Building Products, Warm Gray 643	276.92	0.00%	276.92	SF
FT-6 Floor Tile Grout: Custom Building Products, Haystack 380	992.8	0.00%	992.8	SF
FT-7 Floor Tile Grout: Beige	101.79	0.00%	101.79	SF
FT-8 Floor Tile Grout: Custom Building Products, Light Smoke 145	283.33	0.00%	283.33	SF
FT-9 Floor Tile Grout: Custom Building Products, Oyster Gray 386	1,093.13	0.00%	1,093.13	SF
Floor Tile @Level 3 RR Grout	67.14	0.00%	67.14	SF
Shower Floor Tile @Pet Spa Grout	30.45	0.00%	30.45	SF
WT-1 Wall Tile Grout: Custom Building Products, Antique White 10	142.54	0.00%	142.54	SF
WT-2 Wall Tile Grout: Custom Building Products, Rolling Fog 544	557.33	0.00%	557.33	SF
WT-3 Wall Tile Grout: Custom Building Products, Bleached Wood 545	144.24	0.00%	144.24	SF
WT-4 Wall Tile Grout: Custom Building Products, Rolling Fog 544	49.1	0.00%	49.1	SF
WT-5 Wall Tile Grout: TBD	77.78	0.00%	77.78	SF
WT-7 Wall Tile Grout: Custom Building Products, Driftwood 545	160.23	0.00%	160.23	SF
WT-8 Wall Tile Grout: Custom Building Products, Khaki 186	182	0.00%	182	SF
WT-9 Wall Tile Grout: Custom Building Products, Snow White 11	699.49	0.00%	699.49	SF
WT-10 Wall Tile Grout: TBD	501.89	0.00%	501.89	SF
WT-11 Wall Tile Grout: Custom Building Products, Delorean Gray 165	128.51	0.00%	128.51	SF
WT-12 Wall Tile Grout: TBD	23.87	0.00%	23.87	SF
WT-13 Wall Tile Grout: TBD	111.13	0.00%	111.13	SF
WT-14 Wall Tile Grout: TBD	313.82	0.00%	313.82	SF
WT-16 Wall Tile Grout: TBD	36.56	0.00%	36.56	SF

WT-18 Wall Tile Grout: TBD	131.44	0.00%	131.44	SF
Wall Tile @Level 3 RR Wet Wall Grout	60.99	0.00%	60.99	SF
Crack Isolation Membrane	3,913.96	0.00%	3,913.96	SF
Waterproofing Membrane @Floor	2,893.66	0.00%	2,893.66	SF
Waterproofing Membrane @Wall	1,781.52	0.00%	1,781.52	SF

**Northwood Ravin Apartments - Units - Bldg 1000-4000 - Quantities**

Item Name	Net Area	Waste Ratio	Qty	Unit
CPT Carpet @Non Premium units bedrooms: Shaw, Urban Elegance PZ023, Pavement 00501, (12"wide)	8,095.21	17.10%	9,763.28	SY
LVT @Podium Units: Cobalt Surfaces, Katanga, Myrtle KP5-801, (7"x48")	66,502.48	6.90%	71,404.67	SF
LVT @Units throughout: Cobalt Surfaces, Petrous, Cascade P20-410, (6"x48")	144,577.35	5.90%	153,640.00	SF
FT Floor Tile @Unit Bathroom: Emser, Fragmento, White Small Speckle, Matte, (12"x24" - 1/3 offset Install	38,148.63	13.40%	44,054.00	SF
FT Shower Floor Tile @Unit Bathroom: Emser, Fragmento, White Small Speckle, Matte, (3" Hex Mosaics - 12"x12" mesh mount	4,331.14	11.10%	4,870.00	SF
Bench Top & Front Tile	2,701.43	21.10%	3,423.00	SF
WT Wall Tile @Units Kitchen Backsplash: Shaw Multifamily, Framework 4" Rounded Mosaics, Glossy TG15H, Simple White 100, (13.19"x13.19" Mosaics sheet	10,449.57	22.00%	13,390.12	SF
WT Wall Tile @Units Premium Bathroom Vanity: Daltile, Keystone - Penny rounds, Arctic white D617, Matte, (1"x1" Mosaics mounted on 12"x24" sheet	2,976.45	27.30%	4,092.00	SF
WT Wall Tile @Units Tub/Shower Surround Accent: Daltile, Color Wheel Linear, Arctic White 0190, Semi Gloss, (4"x8")	21,268.54	4.00%	22,150.67	SF
WT Wall Tile @Units Tub/Shower Surround: Daltile, Color Wheel Linear, Arctic White 0190, Semi Gloss, (8"x24")	30,661.98	16.50%	36,741.33	SF
Carpet to Resilient Transition	1,141.48	0.00%	1,141.48	LF
Carpet to Tile Transition	1,446.77	0.00%	1,446.77	LF
Resilient to Tile Transition	1,773.75	0.00%	1,773.75	LF
Unit Entry Transition	1,118.84	0.00%	1,118.84	LF
Nosing @Stairs	418	0.00%	418	LF
Tile Edge Trim @Bathroom	12,757.92	0.00%	12,757.92	LF
FT Floor Tile @Unit Bathroom Grout	38,148.63	0.00%	38,148.63	SF
FT Shower Floor Tile @Unit Bathroom Grout	4,331.14	0.00%	4,331.14	SF
Bench Top & Front Tile Grout	2,701.43	0.00%	2,701.43	SF
WT Wall Tile @Units Kitchen Backsplash Grout	10,449.57	0.00%	10,449.57	SF
WT Wall Tile @Units Premium Bathroom Vanity Grout	2,976.45	0.00%	2,976.45	SF
WT Wall Tile @Units Tub/Shower Surround Accent Grout	21,268.54	0.00%	21,268.54	SF
WT Wall Tile @Units Tub/Shower Surround Grout	30,661.98	0.00%	30,661.98	SF
Waterproofing Membrane @Floor	42,479.77	0.00%	42,479.77	SF
Waterproofing Membrane @Wall	57,608.40	0.00%	57,608.40	SF

**Northwood Ravin Apartments - Units - Bldg 5000 - Quantities**

Item Name	Net Area	Waste Ratio	Qty	Unit
LVT @Podium Units: Cobalt Surfaces, Katanga, Myrtle KP5-801, (7"x48")	1,651.15	8.10%	1,796.67	SF
LVT @Units throughout: Cobalt Surfaces, Petrous, Cascade P20-410, (6"x48")	9,463.87	6.20%	10,094.00	SF
FT Floor Tile @Unit Bathroom: Emser, Fragmento, White Small Speckle, Matte, (12"x24" – 1/3 offset Install	1,240.50	17.20%	1,498.00	SF
FT Shower Floor Tile @Unit Bathroom: Emser, Fragmento, White Small Speckle, Matte, (3" Hex Mosaics – 12"x12" mesh mount	129.23	12.10%	147	SF
Bench Top & Front Tile	93.92	16.10%	112	SF
WT Wall Tile @Units Kitchen Backsplash: Shaw Multifamily, Framework 4" Rounded Mosaics, Glossy TG15H, Simple White 100, (13.19"x13.19" Mosaics sheet	204.29	22.10%	262.17	SF
WT Wall Tile @Units Premium Bathroom Vanity: Daltile, Keystone – Penny rounds, Arctic white D617, Matte, (1"x1" Mosaics mounted on 12"x24" sheet	659.77	28.60%	924	SF
WT Wall Tile @Units Tub/Shower Surround Accent: Daltile, Color Wheel Linear, Arctic White 0190, Semi Gloss, (4"x8"	733.2	3.40%	759.11	SF
WT Wall Tile @Units Tub/Shower Surround: Daltile, Color Wheel Linear, Arctic White 0190, Semi Gloss, (8"x24")	1,200.49	17.00%	1,446.67	SF
Resilient to Tile Transition	79.21	0.00%	79.21	LF
Nosing @Stairs	1,015.00	0.00%	1,015.00	LF
Tile Edge Trim @Bathroom	466.9	0.00%	466.9	LF
Concrete @Garage	2,761.61	0.00%	2,761.61	SF
FT Floor Tile @Unit Bathroom Grout	1,240.50	0.00%	1,240.50	SF
FT Shower Floor Tile @Unit Bathroom Grout	129.23	0.00%	129.23	SF
Bench Top & Front Tile Grout	93.92	0.00%	93.92	SF
WT Wall Tile @Units Kitchen Backsplash Grout	204.29	0.00%	204.29	SF
WT Wall Tile @Units Premium Bathroom Vanity Grout	659.77	0.00%	659.77	SF
WT Wall Tile @Units Tub/Shower Surround Accent Grout	733.2	0.00%	733.2	SF
WT Wall Tile @Units Tub/Shower Surround Grout	1,200.49	0.00%	1,200.49	SF
Waterproofing Membrane @Floor	1,369.73	0.00%	1,369.73	SF
Waterproofing Membrane @Wall	2,687.38	0.00%	2,687.38	SF



**Northwood Ravin Apartments - Units - Bldg 6000 - Quantities**

Item Name	Net Area	Waste Ratio	Qty	Unit
LVT @Podium Units: Cobalt Surfaces, Katanga, Myrtle KP5-801, (7"x48")	943.51	8.10%	1,026.67	SF
LVT @Units throughout: Cobalt Surfaces, Petrous, Cascade P20-410, (6"x48")	5,407.93	6.20%	5,768.00	SF
FT Floor Tile @Unit Bathroom: Emser, Fragmento, White Small Speckle, Matte, (12"x24" – 1/3 offset Install	708.85	17.20%	856	SF
FT Shower Floor Tile @Unit Bathroom: Emser, Fragmento, White Small Speckle, Matte, (3" Hex Mosaics – 12"x12" mesh mount	73.85	12.10%	84	SF
Bench Top & Front Tile	53.67	16.10%	64	SF
WT Wall Tile @Units Kitchen Backsplash: Shaw Multifamily, Framework 4" Rounded Mosaics, Glossy TG15H, Simple White 100, (13.19"x13.19" Mosaics sheet	116.74	22.10%	149.81	SF
WT Wall Tile @Units Premium Bathroom Vanity: Daltile, Keystone – Penny rounds, Arctic white D617, Matte, (1"x1" Mosaics mounted on 12"x24" sheet	377.01	28.60%	528	SF
WT Wall Tile @Units Tub/Shower Surround Accent: Daltile, Color Wheel Linear, Arctic White 0190, Semi Gloss, (4"x8"	418.97	3.40%	433.78	SF
WT Wall Tile @Units Tub/Shower Surround: Daltile, Color Wheel Linear, Arctic White 0190, Semi Gloss, (8"x24")	685.99	17.00%	826.67	SF
Resilient to Tile Transition	45.26	0.00%	45.26	LF
Nosing @Stairs	580	0.00%	580	LF
Tile Edge Trim @Bathroom	266.8	0.00%	266.8	LF
Concrete @Garage	1,578.07	0.00%	1,578.07	SF
FT Floor Tile @Unit Bathroom Grout	708.85	0.00%	708.85	SF
FT Shower Floor Tile @Unit Bathroom Grout	73.85	0.00%	73.85	SF
Bench Top & Front Tile Grout	53.67	0.00%	53.67	SF
WT Wall Tile @Units Kitchen Backsplash Grout	116.74	0.00%	116.74	SF
WT Wall Tile @Units Premium Bathroom Vanity Grout	377.01	0.00%	377.01	SF
WT Wall Tile @Units Tub/Shower Surround Accent Grout	418.97	0.00%	418.97	SF
WT Wall Tile @Units Tub/Shower Surround Grout	685.99	0.00%	685.99	SF
Waterproofing Membrane @Floor	782.7	0.00%	782.7	SF
Waterproofing Membrane @Wall	1,535.65	0.00%	1,535.65	SF

## MATERIAL SPECIFICATION

Project Name:	Novel University Hill
Architect/Interior Designer:	KTGY Group
Date on Drawings:	7/11/2024
Estimator:	B&H
Floor Plan Scale:	1/8" = 1'-0"

### **Finish Specification:**

#### **Carpet (Tile/Broadloom)**

##### **F-CO1**

Link: <https://www.jjflooringgroup.com/product/atmospheric/>

Detail: J&J Flooring Group, Atmospheric 7713 Modular, 2324 Blue Kashi, 24" x 24", \$60 / SY

Size: 24" x 24"

Location: Lobby

Note: Schluter between all finishes

##### **F-CO2**

Link: <https://fcproductcatalog.milliken.com/en-us/search/colors?sort=recent&regionName=Americas&marketName=Hospitality&catalogName=Products&regionId=76&marketId=71&catalogId=17&collectionId=554&collectionName=Revelation&designId=2599&colorId=33871&totalResults=18>

Detail: Milliken, Excursion, PWY108, 19.7" x 39.4", \$32 / SY (for material only) / \$45/SY (Installed)

Size: 19.7" x 39.4"

Location: Leasing Office & Sky Lounge

Note: Schluter between all finishes

##### **F-CO3**

Link: <https://www.jaipurliving.com/genesis-ges03.html>

Detail: Jaipur, Genesis GES03 Combs, \$25 / SF

Size: **SY & Count Provided as custom sizes available**

Location: Inset Rug - Leasing

Note: Schluter between all finishes

### **Contact:**

**+437-667-6747**

**+647-970-0360**

**Email: [info@bhconsultantsltd.com](mailto:info@bhconsultantsltd.com)**





# B&H CONSULTANTS LTD.

## F-CO4

Link: <https://www.shawcontract.com/en-us/products/5t451?>

Detail: Shaw, In Common Tile, Connect 50505, 9" x 36", \$45 / SY (Installed), Herringbone

Size: 9" x 36"

Location: Co-Working

Note: To be installed in Herringbone pattern

## F-CO5

Link: <https://www.jaipurliving.com/genesis-ges21.html>

Detail: Genesis GES21 (Custom Color), \$45 / SY (Installed)

Size: SY & Count Provided as custom sizes available

Location: Inset Rug - Club Room

Note: Schluter between all finishes

## F-CO6

Link: <https://www.jiflooringgroup.com/product/atmospheric/>

Detail: J&J Flooring Group, Atmospheric, Color TBD, 24" x 24", \$60 / SY

Size: 24" x 24"

Location: Inset Rug - Sky Lounge

Note: Schluter between all finishes

## F-CO7

Link: <https://www.bentleymills.com/product/78-rough-idea-shear/>

Detail: Bentley, Rough Idea Shear 8RN24, Outline 800115, 24" x 24", \$48 / SY

Size: 24" x 24"

Location: Walk Off Matt - Vestibule

Note: Schluter between all finishes

## F-CO8

Link:

<https://fccatalogblob.milliken.com/fccatalogblob/documents/52/01/The%20Space%20Between%20Brochure.pdf?v=2023.06.08.17.23.42>

Detail: Milliken, The Space Between, Adorne, 19.7" x 19.7", \$23 / SY

Size: 19.7" x 19.7"

Location: Inset Rug - LOTH & Co-Work

Note: Schluter between all finishes

## RF-CO1

Link: <https://www.shawcontract.com/en-us/products/5t389?>

Detail: Shaw, Balcony 5T389, Path 88555, 24" x 24", Quarter Turn Install

Size: 24" x 24"

Location: Corridor Carpet Tile

## Carpet @Unit Bedroom/closet

Link: <https://www.mohawkbuild.com/products/carpet/Enriched-Texture-II?cc=776>

Detail: Mohawk, Enriched Texture II, 776 Hourglass, 12'W

Size: 12'W (size taken from manufacturer's website)

### Contact:

+437-667-6747

+647-970-0360

Email: [info@bhconsultantsltd.com](mailto:info@bhconsultantsltd.com)



# B&H CONSULTANTS LTD.

## Resilient (Sheet Vinyl/Tile/Planks/Hardwood)

### F-LVT01

Link:

[https://s7d4.scene7.com/is/content/MohawkResidential/mohawk/marketing/document/brochure/colle ction-brochure/mhg\\_Sakiori\\_collection\\_brochure.pdf](https://s7d4.scene7.com/is/content/MohawkResidential/mohawk/marketing/document/brochure/colle ction-brochure/mhg_Sakiori_collection_brochure.pdf)

**Detail:** Mohawk Group, Sakiori Weave CR709, 935 Mbongolo, 18" x 36", \$6 / SF

**Size:** 18" x 36"

**Location:** Workroom

### F-RL01

Link: <https://www.ecosurfaces.com/products/heterogeneous-vinyl/cosmos-rx>

**Detail:** Eco Surfaces, Cosmos Rx, 9928 New Moon, 72" x 30', \$8 / SF

**Size:** 72" x 30'

**Location:** Fitness

### F-RL03

Link: <https://ecosurfaces.com/products/rubber/ecofit>

**Detail:** Eco Surfaces, ECOfit 1214, Take One, 48" x 25', \$9 / SF

**Size:** 48" x 25'

**Location:** Fitness

### F-RL04

Link: [https://www.chilewich.com/restaurants\\_hotels/boucle-natural-large.html](https://www.chilewich.com/restaurants_hotels/boucle-natural-large.html)

**Detail:** Chilewich, Boucle, Natural, 72"W x 106"L, \$7 / SF

**Size:** 72" W (Bid set Size) 72"Wx106"L (Manufacturers Website's Size – multiple sizes available)

**Location:** Studio Fitness

### F-RL05

Link: <https://www.ecosurfaces.com/products/heterogeneous-vinyl/forest-rx>

**Detail:** Eco Surfaces, Forest Rx, Natural, 72"W X 30', \$8 / SF

**Size:** 72"W X 30LF

**Location:** Recovery

### F-WD01

Link: <http://etxflooring.com/product/maestro-white-oak-harmony/>

**Detail:** ETX Surfaces, Harmony Maestro Collection, White Oak, UV Finish, Matte, 9.5" x 82-5/8", \$11 - 12/SF

**Size:** 9.5" x 82-5/8"

### F-WD02 (NOT USED)

Link: NA

**Detail:** 3" - 6" W, \$12/SF

**Size:** 3" - 6" W

## Contact:

+437-667-6747

+647-970-0360

Email: [info@bhconsultantsltd.com](mailto:info@bhconsultantsltd.com)

## BF-VCT01

**Link:** <https://www.armstrongflooring.com/commercial/en-us/products/vinyl-composition-tile/std-excelon-imp-texture/item/57551.html>

**Detail:** Armstrong, Imperial Texture, 57551 Perfect Storm, 12" x 12", \$2 / SF

**Size:** 12" x 12"

**Location:** BOH / Mechanical VCT

## LVP @Units

**Link:** <https://cobaltsurfaces.com/katanga-loose-lay-and-glue-down-lvt/myrtle/>

**Detail:** Cobalt Katanga, 12 mil LVP, Myrtle, 7"x48"

**Size:** 7"x48"

**Location:** Throughout unit at ground floor and throughout unit except bedroom at upper floors

**Note:** Provide ¼" Acoustimat sound mat

## Tile

### F-T01

**Link:** N/A

**Detail:** Trinity Tile, Range, Ecru Matte, 9.5" x 60", \$6 / SF

**Size:** 9.5" x 60"

**Note:** To match wood flooring F-WD01

### F-T02

**Link:** <https://www.daltile.com/products/terrazzo-look/outlander/marine>

**Detail:** Dal Tile, Outlander, Marine OU55, Matte, 24" x 48", \$40 / SF

**Size:** 24" x 48"

### F-T03

**Link:** <https://gstile.com/shop/?filter-collections=dolomia>

**Detail:** Garden State Tile, Dolomia Mosaic Module, Mix of - Mandacaru, Arizona, Bora Bora & Ash, 6" x 6", \$36 / SF

**Size:** 6" x 6"

### F-T04

**Link:** <https://architessa.com/products/overlook>

**Detail:** Architessa, Overlook, Matte Black, 2.5" x 10", \$6 / SF

**Size:** 2.5" x 10"

### F-T05

**Link:** <https://cdn.shopify.com/s/files/1/0416/7847/1329/files/SUMMIT.pdf?v=1676479888>

**Detail:** Architessa, Summit, Moon, Natural, 48" x 48", \$5-6 / SF

**Size:** 48" x 48"

### F-T06

**Link:** <https://gstile.com/product/geo-8-x-8-monochrome-deco/>

**Detail:** Garden State Tile, Capsule Geo, Monochrome DIS60-336, Black / White, 8" x 8", \$104 / SF

**Size:** 8" x 8"

**Location:** Patterned Tile at Clubroom Bar

## **Contact:**

**+437-667-6747**

**+647-970-0360**

**Email: [info@bhconsultantsltd.com](mailto:info@bhconsultantsltd.com)**

## F-T07

**Link:** <https://www.tilebar.com/adorno-hexagon-magma-7x13-matte-porcelain-tile.html>

**Detail:** Tilebar, Adorno, Hexagon Magma, 7" x 13", \$7.50 / SF

**Size:** 7" x 13"

**Location:** Patterned Floor Tile at Makers Space

## F-T08

**Link:** <https://www.marazziusa.com/products/concrete-look/scenario/nero-convex>

**Detail:** Marazzi, Scenario SR27 Nero, Convex, 8" x 8", \$6.10 / SF

**Size:** 8" x 8"

**Location:** Patterned Floor Tile at Sky Lounge

## S-T01

**Link:** [https://cdn.shopify.com/s/files/1/0272/6956/2456/files/DSP\\_Ironworks.pdf](https://cdn.shopify.com/s/files/1/0272/6956/2456/files/DSP_Ironworks.pdf)

**Detail:** Artistic Tile, Ironworks, Copper Metallic, 4" x 12" – Custom size, \$21 / SF

**Size:** 4" x 12"

**Location:** Feature Wall Tile

## S-T02

**Detail:** Trinity Tile, Color Wheel, Patagonia Matte, 3" x 9", \$7 / SF

**Size:** 3" x 9"

**Location:** White Subway Tile [LOTH+ Elevator Entry + Break Room + Makers Space]

## S-T03

**Link:** <https://www.tilebar.com/colorplay-inflex-white-4-5x18-3d-glossy-crackled-ceramic-tile.html>

**Detail:** Tilebar, Colorplay Inflex 3D, White Glossy, 4.5" x 18", \$11.25 / SF

**Size:** 4.5" x 18"

**Location:** Linear Wall Tile [Lounge]

## S-T05

**Link:** <https://www.marazziusa.com/products/concrete-look/scenario/nero-convex>

**Detail:** Marazzi, Scenario SR27 Nero Convex, 8" x 8", \$6.10 / SF

**Size:** 8" x 8"

**Location:** Sky Lounge

## S-T07

**Link:** <https://www.tilebar.com/colorplay-fluted-emerald-green-4-5x18-3d-glossy-crackled-ceramic-tile.html>

**Detail:** Tilebar, Colorplay Fluted Emerald Green, 3D Glossy, 4.43" x 17.62", \$12 / SF

**Size:** 4.43" x 17.62"

**Location:** LOTH + Coworking + Bathrooms

## S-T08

**Link:** <https://www.flooranddecor.com/porcelain-tile/napoli-sand-porcelain-stacked-mosaic-101135283.html>

**Detail:** Artistic Tile / Ceramic Technics, Napoli Fragments Deco 01, 12" x 12", \$25 / SF

**Size:** 12" x 12"

**Location:** Lounge

### Contact:

**+437-667-6747**

**+647-970-0360**

**Email: [info@bhconsultantsltd.com](mailto:info@bhconsultantsltd.com)**



# B&H CONSULTANTS LTD.

## S-T10

Link: <https://cdn.shopify.com/s/files/1/0416/7847/1329/files/SUMMIT.pdf?v=1676479888>

Detail: Architessa, Summit, Moon Natural, 24" x 24", \$5 - 6 / SF

Size: 24"x24" (bidset size not verified from manufacturer)

Location: Dog Spa

## RF-T01

Link: <https://cdn.shopify.com/s/files/1/0416/7847/1329/files/SUMMIT.pdf?v=1676479888>

Detail: Architessa, Summit, Moon Natural, 48" x 48", \$5-6 / SF

Size: 48" x 48"

Note: To Match F-T05

## RF-T02

Link: <https://architessa.com/products/overlook>

Detail: Architessa, Overlook, Matte Brick, Matte Black, 2.5" x 10", \$5-6 / SF

Size: 2.5" x 10"

Location: Black Border Tile

## RF-T03

Link: NA

Detail: Trinity Tile, Range, Ecru Matte, 9.5" x 60", \$6 / SF

Size: 9.5" x 60"

Note: To Match F-T01

## EL-02

Link: <https://cdn.shopify.com/s/files/1/0416/7847/1329/files/OVERLOOK.pdf?v=1674850857>

Detail: Architessa, Summit, Moon Natural, 48" x 48", \$5-6 / SF

Size: 48" x 48"

## RS-T01

Link: [https://cdn.shopify.com/s/files/1/0272/6956/2456/files/DSP\\_Ironworks.pdf](https://cdn.shopify.com/s/files/1/0272/6956/2456/files/DSP_Ironworks.pdf)

Detail: Artistic Tile, Ironworks, Copper Mettalic, Custom size, \$21/SF

Size: 4"x12"

Note: Size assumed referring S-T01

## Kitchen Backsplash Tile @Units

Link: <https://www.emser.com/products/catch-matte>

Detail: Emser, Catch Glazed Ceramic Tile, F14CATCIC0208M, Ice, Matte, 4"x16"

Size 4"x16"

Note: Horizontal Stack install

## Tub/Shower Surround Tile @Units

Link: <https://www.emser.com/products/passion?variant=31918931443825>

Detail: Emser, Passion Blanco, F02SILHCO0312SB, White, 3"x8"

Size 3"x8"

Note: Horizontal Stack install

## Contact:

+437-667-6747

+647-970-0360

Email: [info@bhconsultantsltd.com](mailto:info@bhconsultantsltd.com)



# B&H CONSULTANTS LTD.

## Concrete

### F-SC01

**Detail:** Stained Concrete – Light, Light Grey

**Size:** SF Estimated

### F-SC02

**Detail:** Stained Concrete – Medium, Dark Grey

**Size:** SF Estimated

### BF-SC

**Detail:** Sealed Concrete

**Size:** SF Estimated

### RF-SC01

**Detail:** Stained Concrete – Light

**Size:** SF Estimated

## Base

**WB-05 (Tile Base):** Tile Base

**WB-06 (Viny Base):** Vinyl Base, 6"

**WB-07(Epoxy Wall Base):** Epoxy Wall Base

**BWB-01 (Straight Vinyl Base):** Flexco, Stringers, 093 Graphite, 4"

**Note:** Also, use it at Stringers

## Transitions/Trims

**WT-03 Horizontal Trim:** Solid Wood Trim Nailed to Wall, Paint to match wall tile

**WT-07 Tile to Tile Outside Corner:** Fry Reglet millwork reveal outsider corner

**WT-10 Tile to Gypsum:** Schluter, Jolly

**FT-01 Tile to Tile Transition:** Schluter, Deco

**FT-03 Carpet to Tile Transition:** Schluter, Jolly

**FT-04 Concrete to Tile Transition:** Schluter, Reno-U

**FT-05 Resilient to Tile Transition:** Schluter, Jolly

**FT-06 Resilient to Tile Transition:** Schluter, Reno-U

**FT-07 Border Tile to Wood Transition:** Schluter, Jolly

**FT-09 Resilient to Wood Transition:** Solid wood transition to match adjacent wood floor. Bevel

**FT-11 Tile to Wood Transition:** Schluter, Jolly

**RFT-01 Tile to Tile Transition:** Schluter, Deco

**RFT-02 Tile to Carpet Transition:** Schluter, Jolly

**Carpet to LVT Transition @Units:** Schluter Vinpro-U, VPUL80ACGB, Brushed Nickel Anodized

**Unit Entry Threshold:** Daltile, Double Hollywood Bevel G771, 4", Absolute Black

### **Contact:**

**+437-667-6747**

**+647-970-0360**

**Email: [info@bhconsultantsltd.com](mailto:info@bhconsultantsltd.com)**

## **Takeoff Notes:**

### **Units:**

- Phasing plans are provided, however no pricing breakdown indication provided therefore we have provided overall quantities for now, please verify if phase wise quantities are required.
- Bedroom 1 in B4.2 & B4.1 shows LVT, however we have estimated carpet for now, please verify.
- Tub height is considered to be 1'9" as per plumbing schedule tub details, however elevation shows 1'3", please verify.
- Sound mat estimated at LVP throughout as per material detail, however F3 & F5 floor assembly doesn't show sound mat, please verify.
- Kitchen backsplash tile not estimated behind microwave, please verify if required.
- LVP estimated at 1/3 offset pattern generally as plan shows random pattern.
- Tub/shower surround tile estimated at 8' typical as per mounting height note.
- Separate SF estimated for LVP at Loft unit Stairs, please verify if required.
- Shower niche detail is provided in specifications, however no niche is shown on elevation, therefore not estimated for now, please verify if required.

### **Public:**

- F-CO3 area rug allowance provided in SF, however we have estimated SY for now assuming error in documents, please verify if SF is required.
- WT-07 Fry reglet outside corner trim and WT-03 Wood trim estimated as it is connected with tile, please verify if required.
- Waterproofing not estimated at amenity area as per scope of work document calls for crack isolation membrane at all amenity floor tiles, however finish plan notes calls for waterproofing membrane at all floor tiles, please verify.
- F-EP01 estimated as per finish plan, however no material detail is provided, please verify.
- LOTH Coffee Shop Front Counter elevation at 9C/ID7.06a shows S-SP05, However section at 9A/ID7.6b shows S-T07. Also, Interior renderings at 6A/ ID9.04 shows tile. For now, we have estimated tile, please verify
- F-WD01 Wood flooring tag is indicated outside atrium and coffee shop, however no hatches are shown also it seems to be balcony therefore we haven't estimated F-WD01 for now, please verify if required.
- S-T07 wall tile and F-T05 floor tile estimated in RR A231 as per finish plan, however BOH finish schedule calls for BF-SC floor and BWB-1 base, please verify.
- For Pet Spa, Finish Plan and Elevations at ID4.08 indicates to estimate Dilex-AHK Between Wall Tile to Floor Tile. However, Floor Finish Specified is Sealed Concrete for which Dilex-AHKA can be used, therefore we have estimated Dilex AHKA for now, please verify.
- Epoxy wall base height assumed to be 4"H.
- Elevator Lobbies ceiling height is considered to be 9'6" throughout as RCP only provided for level 3, please verify.
- S-T07 estimated at Skylounge as per elevation and rendering image, however material schedule calls for S-T05 tile at Skylounge, please verify.

### **Contact:**

**+437-667-6747**  
**+647-970-0360**

**Email: [info@bhconsultantsltd.com](mailto:info@bhconsultantsltd.com)**





# B&H CONSULTANTS LTD.

- BF-SC Estimated in Mech A111 as per ID BOH Room Finish Schedule. However, Amenity Finish Plan shows FT-10 transition which is between Resilient to Resilient, please verify
- BF-VCT01 estimated in rooms where architectural interior finish schedule indicates VCT, please verify.
- Separate LF estimated for BWB-01 Vinyl base stringers @Exit stairs as per finish schedule, however stair detail shows stringers to be painted, please verify if required.
- Parking garages finish not indicated, therefore we have not estimated for now, please verify if concrete is required.

## Townhomes:

- Concrete assumed at garage, please verify if required
- Tub/shower surround tile estimated at 9' as per elevation. Also tub height is assumed to be 1'9" as per unit finish matrix, please verify.
- Separate SF estimated for LVP at Stairs, please verify if required.
- Sound mat at LVP estimated throughout, however floor assembly F5 doesn't show sound mat, please verify if we need to estimate according to floor assembly
- LVP estimated at 1/3 offset pattern generally as plan shows random pattern.
- Kitchen backsplash tile not estimated behind microwave, please verify if required.
- Carpet estimated at townhome ground floor bedroom as per finish plan, however unit finish matrix calls for LVP throughout at ground floor (we have considered that only for building units), please verify.
- Shower niche detail is provided in specifications, however no niche is shown on elevation, therefore not estimated for now, please verify if required.

## Contact:

**+437-667-6747**  
**+647-970-0360**

**Email: [info@bhconsultantsltd.com](mailto:info@bhconsultantsltd.com)**